

TSX-V: NOCR
OTCQB: NOCRF
FRA: 03EA.F



Scandinavian explorer focused on **high-grade silver** and polymetallic projects in **prolific historic mining districts**

DISCLAIMER



FORWARD LOOKING STATEMENTS

This presentation contains certain statements that may be deemed “forward-looking statements”. Forward-looking statements are statements that are not historical facts and are generally, but not always, identified by the words “expects”, “plans”, “anticipates”, “believes”, “intends”, “estimates”, “projects”, “potential” and similar expressions, or that events or conditions “will”, “would”, “may”, “could” or “should” occur. Although Norden Crown Metals Corp. believes the expectations expressed in such forward-looking statements are based on reasonable assumptions, such statements are not guarantees of future performance, are subject to risks and uncertainties, and actual results or realities may differ materially from those in the forward-looking statements. Such material risks and uncertainties include, but are not limited to, Norden Crown Metals Corp.’s ability to raise sufficient capital to fund its obligations under its property option agreements, to maintain its mineral tenures and concessions in good standing, to explore and develop its projects, to repay its debt and for general working capital purposes; changes in economic conditions or financial markets; the ability of Norden Crown Metals Corp. to obtain the necessary permits and consents required to explore, drill and develop the projects and if obtained, to obtain such permits and consents in a timely fashion relative to Norden Crown Metals Corp.’s plans and business objectives for the projects; the general ability of Norden Crown Metals Corp. to drill test its projects and find mineral resources; if any mineral resources are discovered or acquired, the Company’s ability to monetize any such mineral resources; and changes in environmental and other laws or regulations that could have an impact on the Company’s operations. Forward-looking statements are based on the reasonable beliefs, estimates and opinions of Norden Crown Metals Corp.’s management on the date the statements are made. Except as required by law, Norden Crown Metals Corp. undertakes no obligation to update these forward-looking statements in the event that management’s beliefs, estimates or opinions, or other factors, should change.

QUALIFIED PERSON

The content of this presentation has been read and approved by Daniel MacNeil, MSc., Vice President Exploration for Norden Crown Metals Corp. Mr. MacNeil is a Qualified Person as defined by National Instrument 43-101 *Standards of Disclosure for Mineral Projects*. Please see footnotes at bottoms of slides with technical information for disclaimer information.

HIGHLIGHTS

Scandinavia – stable, low risk mining jurisdiction, rich mining history

Unparalleled Infrastructure, smelters, inexpensive power

Metal endowed - surrounded by world class mines with potential for rapid resource development

Experienced and accomplished management team

High-grade Copper at Burfjord, Norway and Drill Discovery at Östra Silvberg and newly recognized Broken-Hill Type Mineralization at Fredrikssons Gruvan

Strategic Partners – Boliden Minerals AB (Stockholm:BOL) & EMX Royalty Corp (NYSE:EMX)

TECHNICAL TEAM



Patricio Varas, PGeo - Executive Chairman & CEO

Professional Geoscientist with over 30 years experience in exploration, project development and corporate management. Mr. Varas has worked at operating mines, exploration projects (concept inception to discovery), feasibility studies of world class deposits and mine development. Patricio founded and led Western Potash Corp. as its President and CEO, where his team discovered and developed the Milestone Potash deposit in Saskatchewan. In difficult financing markets, they raised over \$240 Million for Milestone, where a change of control transaction was delivered in 2016. Mr. Varas was instrumental in the discovery of the Santo Domingo Sur deposit in Chile with Far West Mining and part of the discovery team for the Diavik Diamond mine as a project manager while at Kennecott Canada Inc.



Dan MacNeil, MSc, P.Geo – VP Exploration

Precious and base metal specialist with over 16 years of experience with continental-scale project generation to in-mine resource expansion, in a wide variety of geological settings throughout the Americas and Eastern Europe. Expertise include exploration strategy, target and opportunity identification, district entry strategy, business development, strategic evaluation of geologic terranes, and execution of target testing.



Eric Jensen, PhD – Technical Advisor

Over 20 years of industry experience including positions as mine geologist, mine-site exploration geologist, grassroots exploration geologist, and consultant to several major mining companies. He is a co-founder of Bronco Creek Exploration and has served as Chief Geologist and General Manager of Exploration for EMX Royalty Corp (formerly Eurasian Minerals).



David Maher - Technical Advisor

Over 26 years of mineral exploration and mine geology experience in Arizona and Nevada. David has worked in copper exploration and mine modeling with Magma Copper Co, BHP, and other companies in Arizona, Nevada, and Mexico. David joined Bronco Creek Exploration in December 2007, and EMX Royalty Corp (formerly Eurasian Minerals) in 2010.



Rodney Allen - Technical Advisor

Economic geologist with 39 years of experience in mineral exploration and geological research of complex ancient volcanic regions. He has carried out assignments for over 50 mining and mineral exploration companies, universities and government agencies in Australia, Europe, Canada, Turkey and Japan. He was Manager, Geology Research and Development for the Boliden Group, in Sweden for 10 years and is currently Consultant Geologist and CEO for Volcanic Resources. Mr. Allen's geological interpretations were instrumental in the discovery of zinc-lead-copper-silver-gold ore bodies worth over \$33 billion at Garpenberg and Renström in Sweden and Rosebery in Australia.

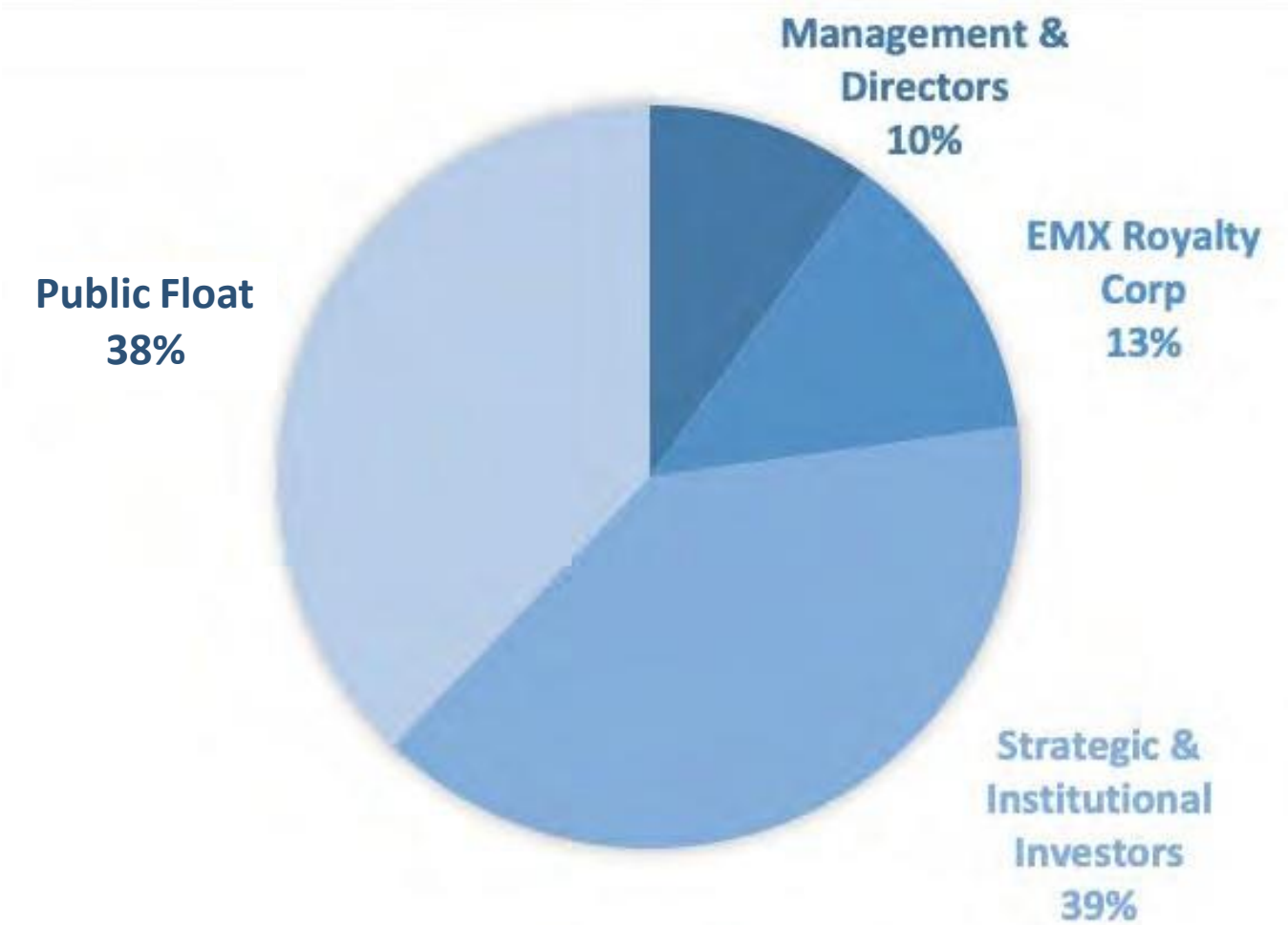
SHARE INFORMATION



Share Performance*



Share Ownership



Capital Structure

Share Outstanding
56.0 M

Market Capitalization*
\$9.0 M

* As at October 6, 2020

METAL PRICES

Zinc trading at near all-time high

Expected zinc supply deficit of 100,000 tonnes for 2022

Global Silver market realized growth in every demand category in 2021

Expected Silver supply deficit of 77M oz for 2022

Total silver demand increase has driven price of silver up 47% since 2017 and expected supply deficit to put further upward pressure on silver price in 2022

ZINC USED IN EVERYDAY LIFE

- **Electrical equipment** – computers, phones, alkaline batteries, nickel-zinc battery for electric cars
- **Consumer goods** – paints, rubber, cosmetics, pharmaceuticals, plastics, fertilizers
- **Construction** – anti-corrosion agent for steel and iron, infrastructure build outs



SCANDINAVIAN EXPLORATION PORTFOLIO:

GUMSBURG, SWEDEN

FREDRIKSSONS GRUVAN (Zn/AG/Pb) – DRILLING Phase 1

OSTRASILVERBERG (Ag, Zn, Pb, Au) – DRILLING Phase 2

VALLBERGET-LOBERGET – (Zn, Ag, Pb) DRILLING Phase 1

GUMSBURG WEST – (Cu, Zn, Pb,) TARGETING

BURFJORD JV – NORWAY

BURFJORD JV – BOLIDEN (Cu, Au, Co) DRILLING Phase 2



SCANDINAVIA



World's Top Jurisdictions

- Stable mineral tenure, low regulatory risk, easy/fast permitting
- Low corporate tax rates: Norway 27%, Sweden 22%, Finland 20%
- Supportive local communities with mining cultures and heritage
- Highly supportive government agencies
- **Fraser Institution ranks Scandinavia among top three mining jurisdictions in the world**

Excellent Infrastructure

- **Six smelters in region, deep water ports near all projects**
- Excellent road and rail systems provide easy access
- All projects within two hour drive of major airports
- **Low cost, abundantly available industrial power (0.03-0.095 €/kWh)**

World Class Mining Districts

- Bergslagen (VMS, CRD, IOCG, SEDEX; **Garpenberg** and Zinkgruvan mines)
- Skellefte (VMS, Orogenic gold; > 6 active mines)
- Norrbotten (IOCG, IOA, Porphyry Cu-Au; Aitik, Malmberget and Kiruna mines)
- Røros/Løkken (VMS; Løkken and Røros districts)

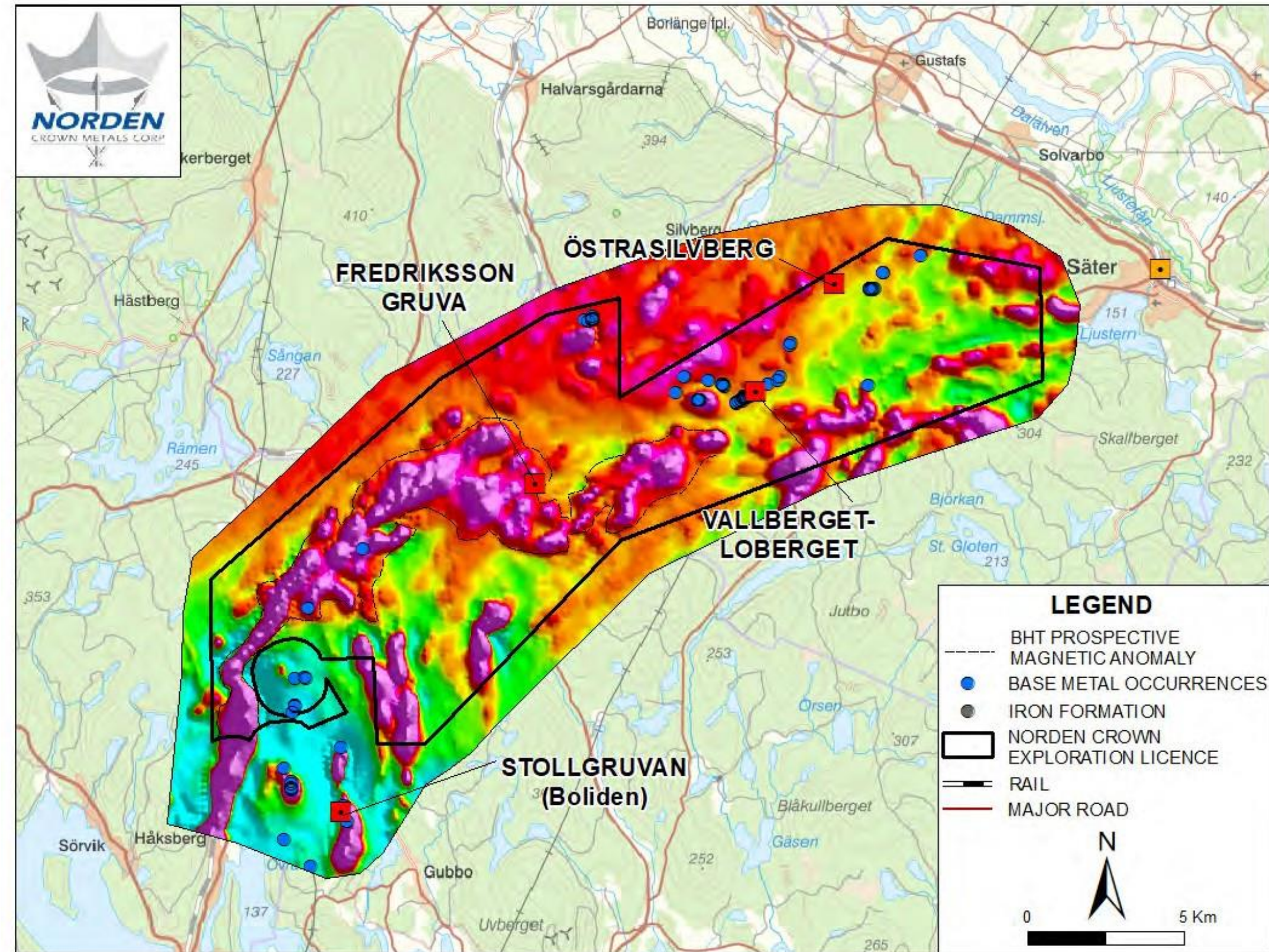
GUMSBURG OVERVIEW – Silver & Zinc

- Extensive historical mining dating from the 1300s; shallow workings and recent drilling confirm significant new potential.
- High grade silver and zinc mineralization with gold and lead; demonstrated in surface outcrops and recent drilling.
- Brownfield exploration, located between world class Falun (historical producer) and Garpenberg (Boliden) deposits.
- Excellent infrastructure, 200 km north-west of Stockholm in the Bergslagen, 3 kms from paved highway.

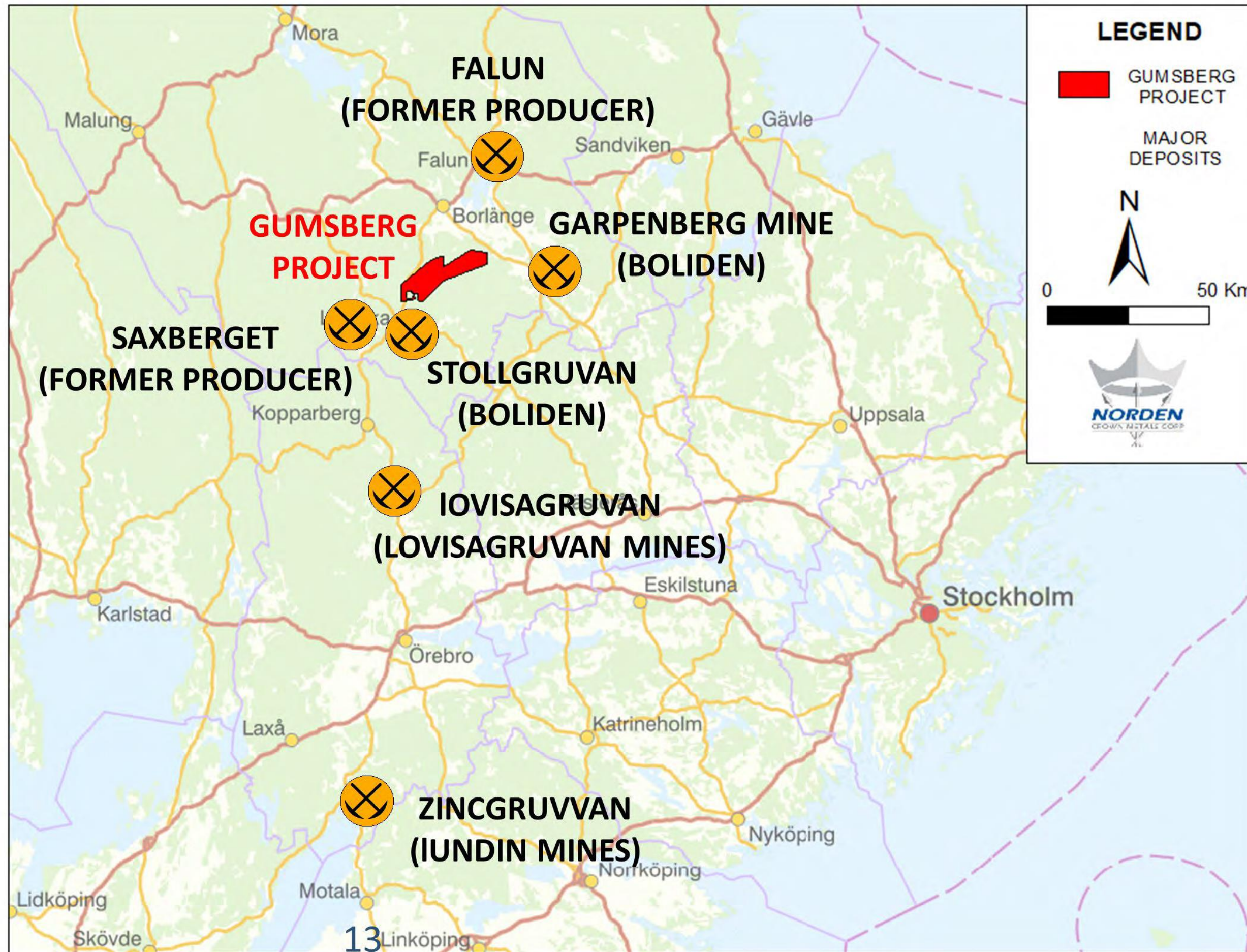
PROSPECTS

- Fredrikssons Gruvan (*Phase 1 Drilling*)
- Östra Silvberg (*Phase 2 Drilling*)
- Vallberget (*Step Out Drilling*)
- Loberget (*Step Out Drilling*)
- Gumsberg West (*Proposed VTEM*)

TARGETS



GUMSBERG PROJECT: THE BERGSLAGEN PROVINCE



GUMSBURG: FREDRIKSSONS GRUVAN (Fredriksson's Mine)

OPPORTUNITY / EXPLORATION POTENTIAL

- **Newly recognized High-grade Broken Hill Type Mineralization exploited by** by LKAB Prospektering AB (PAB; 1976) and acquired by Statsgruvor (ABS; 1977-79).
- Test mining in 1978 of 21,500 tonnes with a grade of **5.13% zinc, 1.7% lead, 53 g/t silver¹**.
- Underground mining (4 levels) in 1978-79 produced 45,000 tonnes of ore with an average grade of **5.77% zinc, 1.84% lead and 49 g/t silver¹**.
- **Open in all directions.**



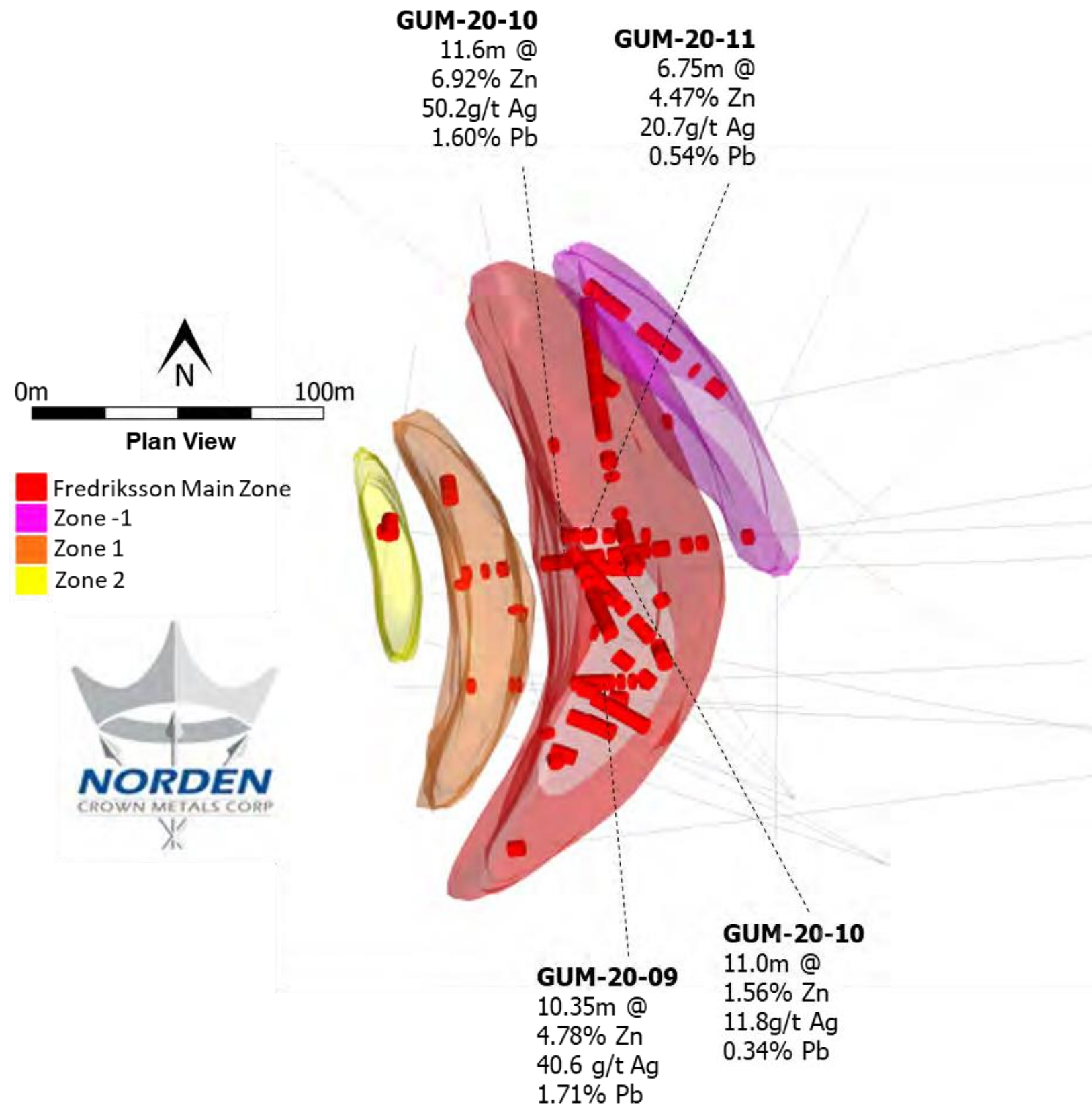
HISTORICAL DRILL RESULTS

Hole ID	From (meters)	To (meters)	Length (meters)	Zinc (%)	Lead (%)	Silver (g/t)	Silver Equivalent
FR-D-1	33.00	37.30	4.30	3.27	1.52	41.18	181.77
FR-D-10	80.35	86.40	6.05	3.71	0.50	15.45	146.05
FR-D-11	76.36	86.60	10.24	6.86	2.20	74.74	346.34
FR-D-21	195.70	199.59	3.89	7.79	1.75	66.13	356.89
FR-D-22	223.60	226.00	2.40	7.79	1.20	19.00	296.77
FR-D-23	191.90	206.79	14.89	3.46	0.78	19.77	148.98
FR-D-24	172.65	173.85	1.20	2.23	1.25	34.00	134.92
FR-D-25	335.07	336.34	1.27	8.37	2.27	37.00	358.60
FR-D-25	353.59	354.62	1.03	14.90	0.85	0.10	497.27
FR-D-5	48.00	59.40	11.40	6.43	1.44	41.39	281.28
FR-D-6	53.25	57.55	4.30	4.77	1.42	28.00	214.26
FR-D-7	74.60	81.80	7.20	6.82	1.16	26.90	272.67
FR-D-9	57.31	64.05	6.74	3.01	0.61	47.23	158.01
FR-D-9	70.50	88.50	18.00	4.87	6.47	25.82	334.51
GY1	3.50	33.60	30.10	3.77	7.43	58.88	355.01
GY3	28.75	36.70	7.95	2.61	0.84	14.52	117.93
GY5	71.45	78.35	6.90	2.64	1.11	21.06	131.80
GY6	17.40	20.30	2.90	3.43	0.41	0.00	119.51
GY7	22.60	27.35	4.75	6.80	2.87	0.00	285.50
GY8	80.90	93.20	12.30	3.32	0.22	0.00	111.50

Insufficient drilling has been completed to definitively determine true thickness; true thickness is estimated to be between 90-95% for holes GUM-20-09 to -11 based on angle to core axis and 3D interpretation. Metal ratios are calculated assuming 100% recoveries at US \$1806 Gold, US \$27.65 Silver, US \$ 1.05 Lead and US \$ 1.29 Zinc. These drill results are historical in nature. Norden has not undertaken any independent investigation of the sampling nor has it independently analyzed the results of the historical exploration work in order to verify the results. Norden considers these historical drill results relevant as the Company will use this data as a guide to plan future exploration programs. The Company also considers the data to be reliable for these purposes, however, the Company's future exploration work will include verification of the data through drilling.

¹Edberg, L., and Flood, B., 1982. Rapport Grb 262 SLUTRAPPORT FRAN DIAMANTBORRNINGARNA VID FREDRIKSSONGRUVAN (GYLLINGEN) 1981/1982© Sveriges geologiska undersökning (SGU) (Geological Survey of Sweden)

GUMSBURG: FREDRIKSSONS GRUVAN 2021 DRILLING RESULTS



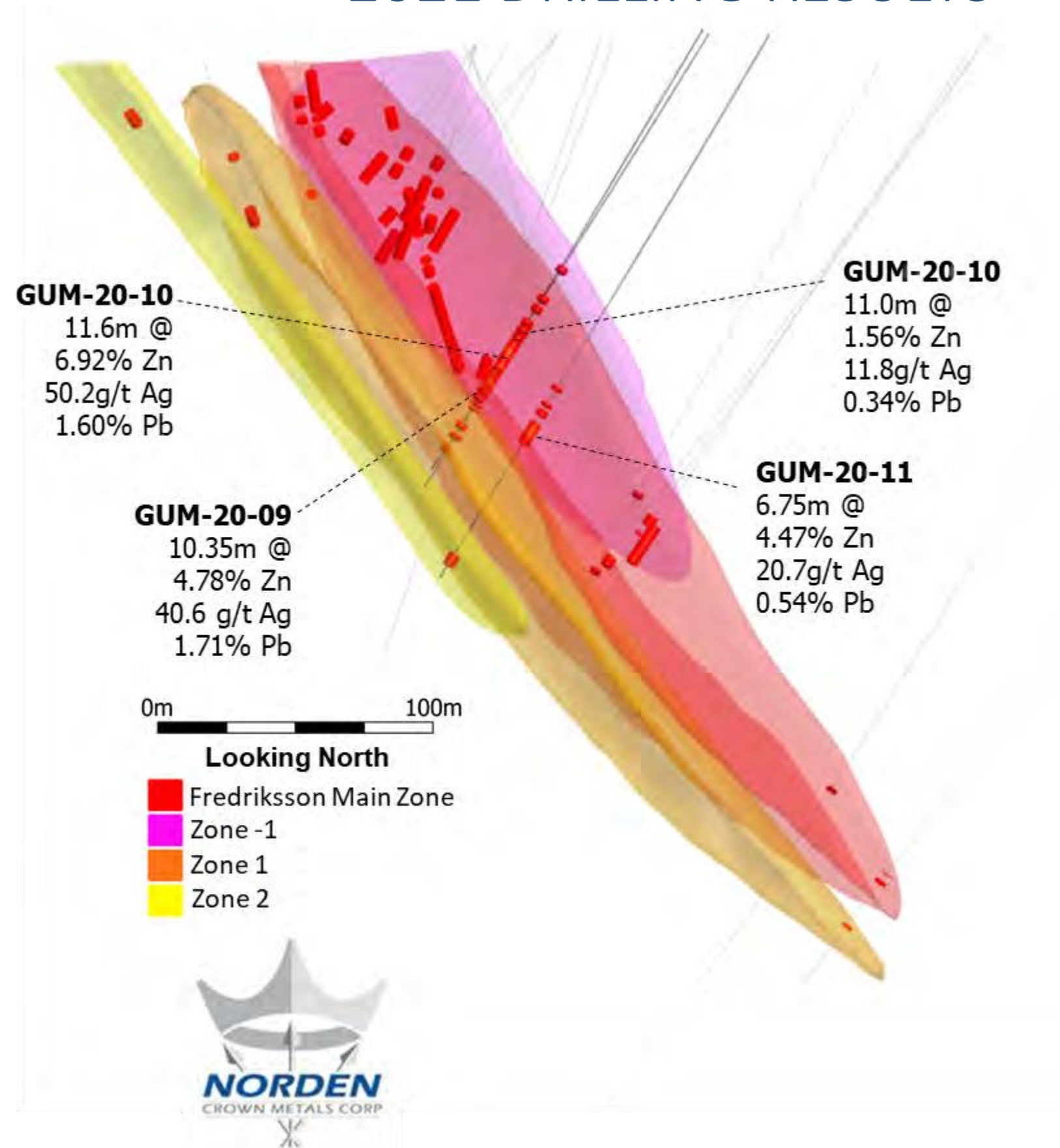
2021 FREDRIKSSONS GRUVAN DRILL RESULTS

Drill Hole	Prospect Name	From (metres)	To (metres)	Length (metres)	Zinc (%)	Lead (%)	Silver (g/t)	Silver Equivalent
GUM-20-09	Fredriksson Gruva	123.70	134.05	10.35	5.24	1.84	43.86	257.61
GUM-20-10	Fredriksson Gruva	134.90	148.50	13.60	6.05	1.39	43.20	272.40
GUM-20-11	Fredriksson Gruva	151.85	160.00	8.15	3.83	0.503	18.13	152.71



GUM-20-11 – Bedded massive sulphide at lower contact with felsic metavolcaniclastic rocks.

GUMSBURG: FREDRIKSSONS GRUVAN 2021 DRILLING RESULTS



2021 FREDRIKSSONS GRUVAN DRILL RESULTS

Drill Hole	Prospect Name	From (metres)	To (metres)	Length (metres)	Zinc (%)	Lead (%)	Silver (g/t)	Silver Equivalent
GUM-20-09	Fredrikssons Gruvan	123.70	134.05	10.35	5.24	1.84	43.86	257.61
GUM-20-10	Fredrikssons Gruvan	134.90	148.50	13.60	6.05	1.39	43.20	272.40
GUM-20-11	Fredrikssons Gruvan	151.85	160.00	8.15	3.83	0.503	18.13	152.71

MASSIVE AND SEMI MASSIVE SULPHIDE MINERALIZATION AT FREDRIKSSON GRUVA



BROKEN HILL-TYPE (BHT) DEPOSITS

GENERAL CHARACTERISTICS

- *Broken Hill Hill-type Pb-Zn-Ag (BHT) deposits constitute some of the largest ore deposits in the world.*
- *The Broken Hill deposit is the largest accumulation of Pb, Zn, and Ag on Earth and the Cannington deposit is currently the largest silver deposit.*

GEOLOGICAL CHARACTERISTICS

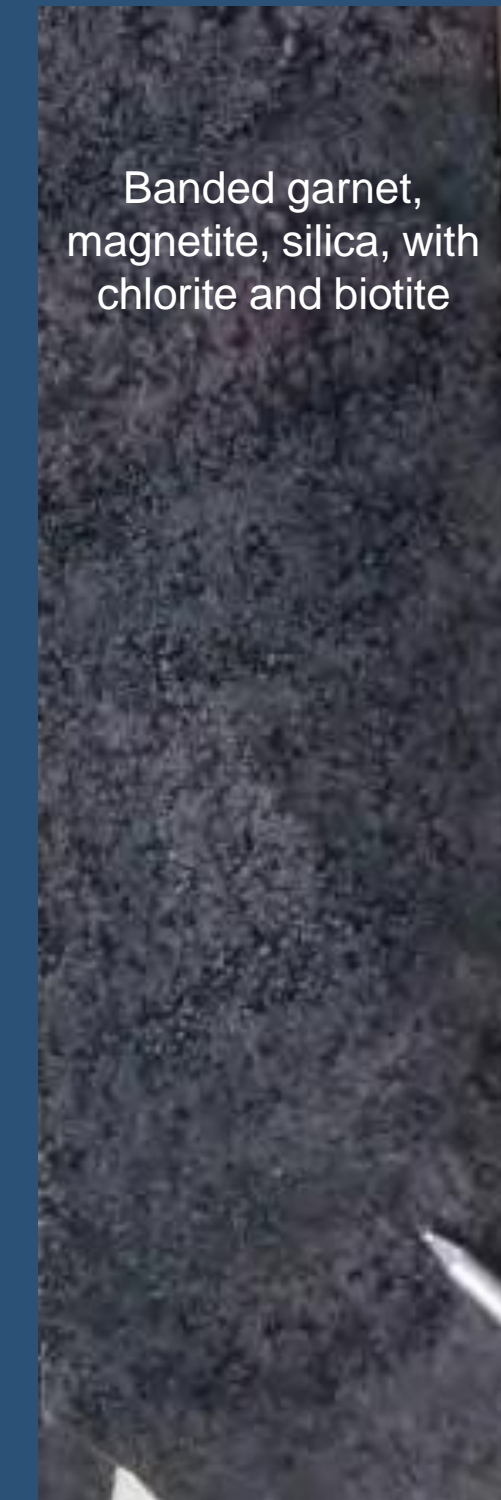
- Restricted age lower-mid Proterozoic mobile belts with a long thermal history.
- Host amphibolite-granulite facies metamorphic terranes.
- Oxidised clastic metasediments probable host lithology.
- Thin exhalite units (e.g. quartz-gahnites) define lateral markers and prospective packages; multiple 'exhalite' horizons common.
- Graphite and pyrite not common in near-ore environments.
- Concentration of amphibolites and possible acid volcanics in near-ore and footwall sequences.
- High Pb:Zn and very high Ag credits (>100ppm) characteristic.
- High Cd, Sb, Mn and Fe, with localised elevated As, Cu, W, Bi and Au.



Bedded Sphalerite



Semi-massive to massive Sphalerite

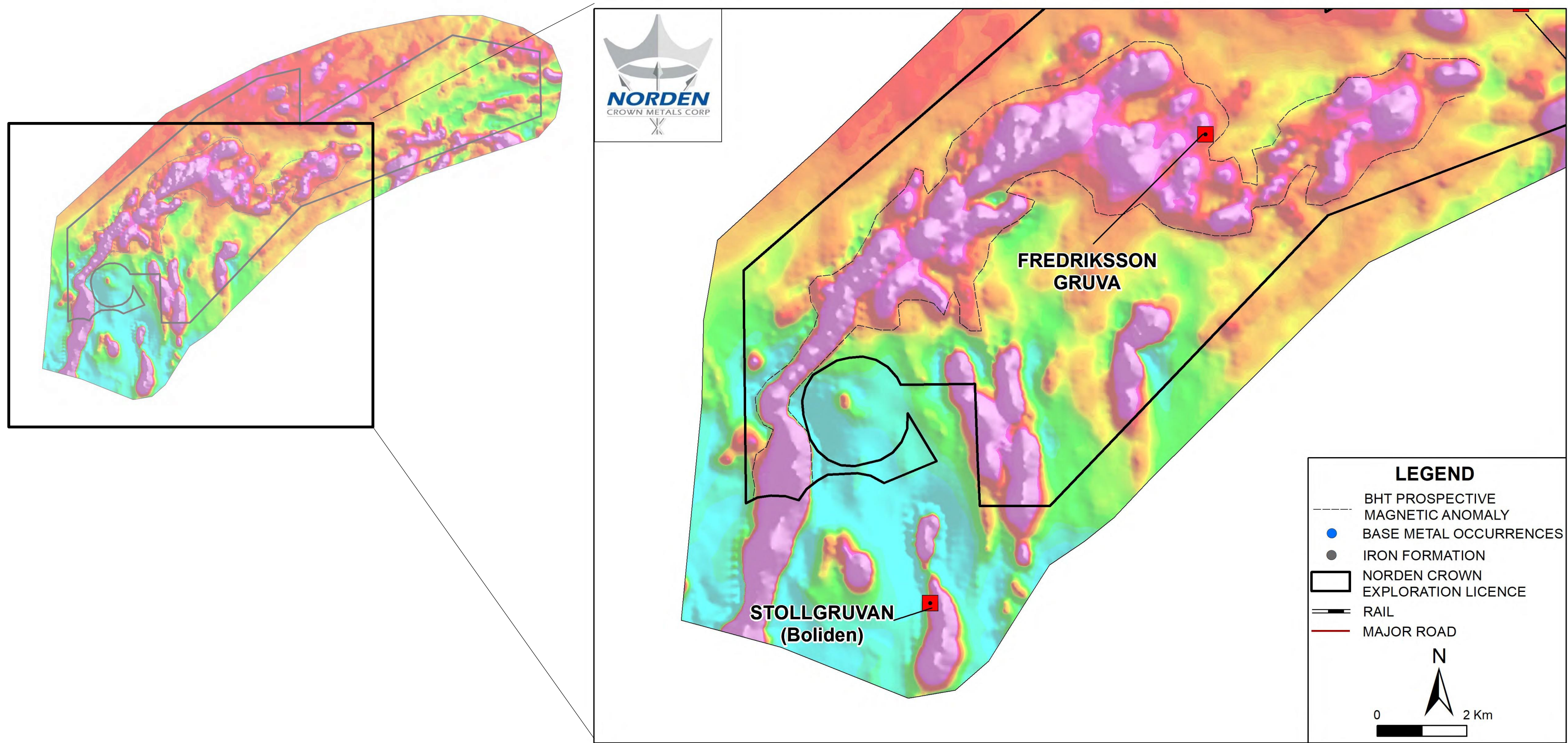


Banded garnet, magnetite, silica, with chlorite and biotite

Fredrikssons Gruvan Mineralization and Host Rocks

TSX-V: NOCR | OTCQB: NOCRF | FRA: 03EA.F

FREDRIKSSONS GRUVAN – 23 KM OF BHT PROSPECTIVITY



GUMSBERG: ÖSTRA SILVBERG



OPPORTUNITY / EXPLORATION POTENTIAL

- **Silver and gold enriched** base metal mineralization.
- Interpreted to be a traditional VMS Deposit.
- **2018/2019 Discovery of the South Zone**, situated immediately south of historical mine workings.
- **Significant silver mine/producer** historically, only five shallow holes drilled in the mine area during the past few decades.
- Norden Crown drilling confirms high grade silver and zinc mineralization found at depth and peripheral to the old mine. Historic drilling tested only shallow mineralization.
- Mineralization remains open along trend at at depth. Deepest mine levels ended in ore.

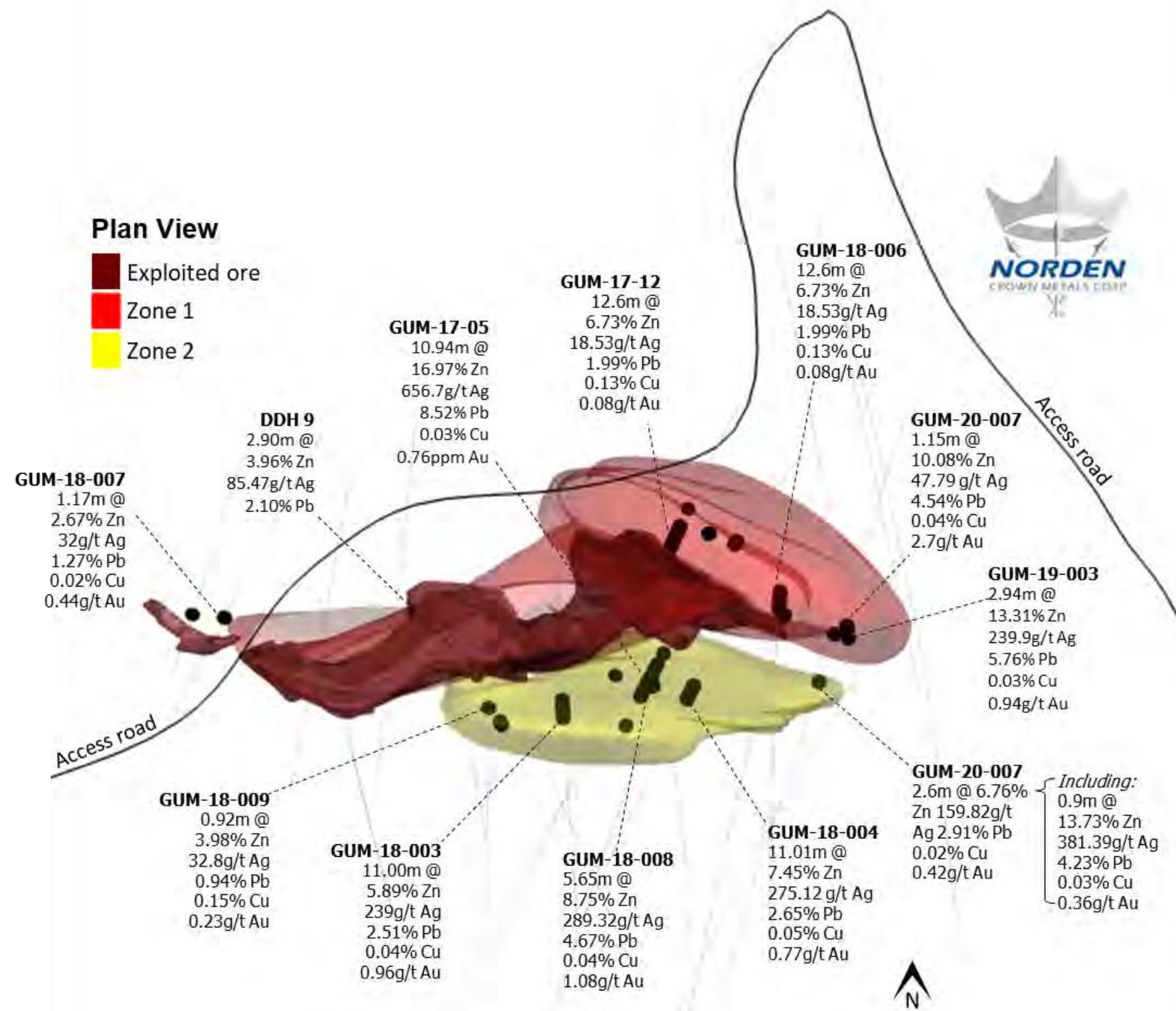
SELECTED DRILL RESULTS

Hole ID	From Meters	To Meters	Length Meters	Ag (g/t)	Au (g/t)	Zn (%)	Pb (%)	Ag EQ (g/t)
BM-17-005	122.30	133.24	10.94	656.70	0.80	17.00	8.52	1454.45
Including	122.30	127.45	5.15	1172.00	1.10	30.60	14.90	2575.45
BM-17-005	155.43	161.00	5.57	288.70	0.90	9.04	3.59	721.71
BM-17-012	332.00	339.00	7.00	12.20	0.20	1.56	0.85	95.28
GUM-18-003	105.00	116.00	11.00	239.00	1.00	5.99	2.51	555.38
Including	105.00	108.00	3.00	386.00	2.30	5.71	2.30	773.37
and	109.65	111.10	1.45	666.50	1.70	24.50	9.37	1783.26
and	113.00	114.00	1.00	222.00	0.70	4.73	2.83	485.99
and	114.80	116.00	1.20	227.00	0.30	6.96	3.49	551.85
GUM-18-004	162.16	173.17	11.01	275.10	0.80	7.45	2.65	628.47
Including	162.16	164.18	2.02	313.00	0.80	11.10	3.61	805.91
and	165.28	166.18	0.90	403.00	1.20	8.93	3.62	852.79
and	165.28	168.50	3.22	343.40	1.50	8.57	3.68	802.67
and	169.45	172.25	2.80	429.10	0.70	11.10	3.25	906.98
GUM-18-06	210.84	223.44	12.60	18.53	0.10	6.73	1.99	287.54
GUM-18-07	103.58	104.75	1.17	32.00	0.40	2.67	1.27	173.60
GUM-18-08	190.75	196.40	5.65	289.30	1.10	8.75	4.67	751.58
GUM-18-09	105.02	105.94	0.92	32.80	0.20	3.98	0.94	195.50

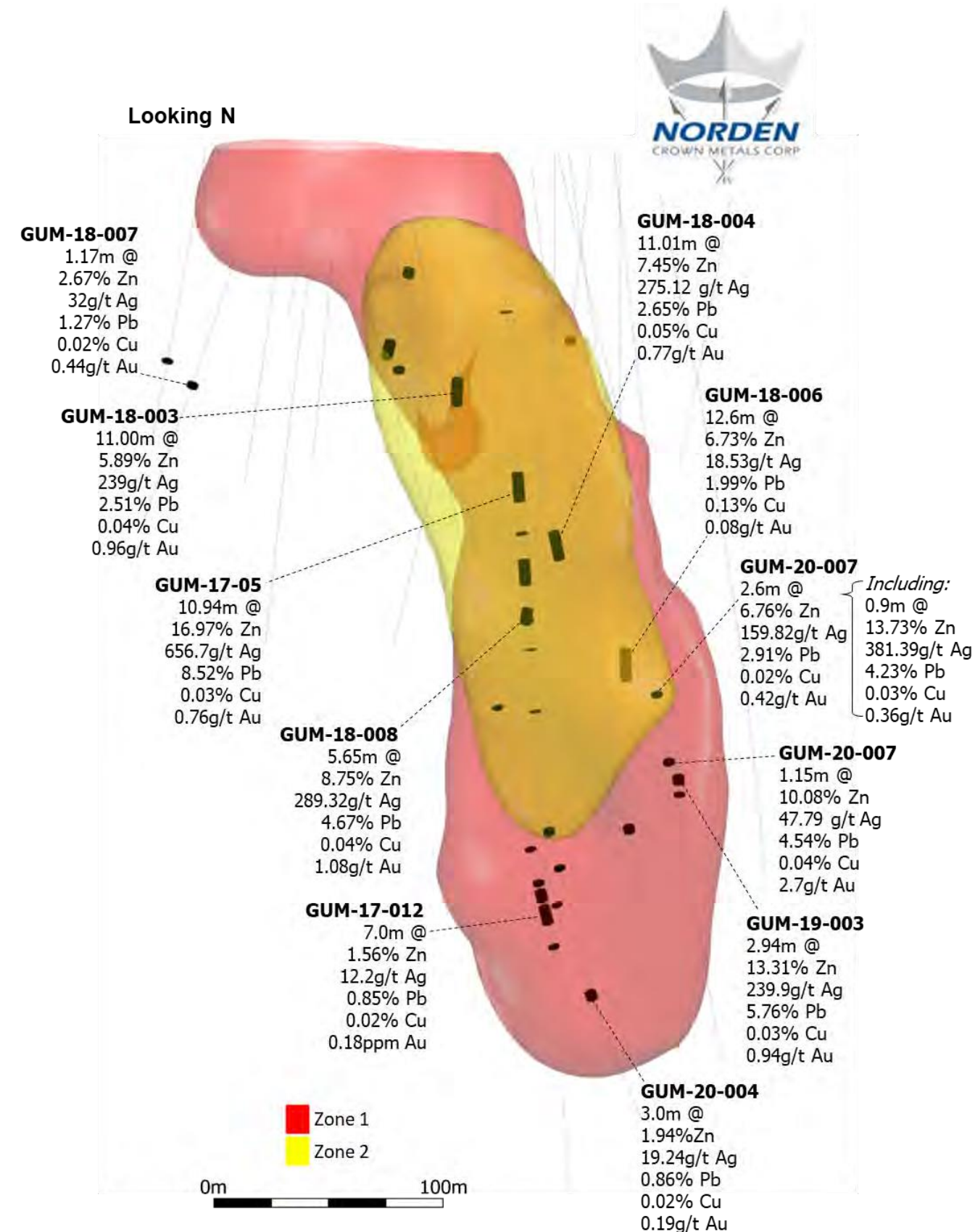
Silver Equivalent is calculated based on 100% recoveries and incorporates the following metal prices: USD \$1,750 Gold, USD\$ 27.65 Silver, USD 0.95 Lead and 1.29 Zinc.

GUMSBURG: ÖSTRA SILVBERG – PLAN AND CROSS SECTION

PLAN SECTION



CROSS SECTION



GUMSBURG: ÖSTRA SILVBERG – MINERALIZATION STYLES



REMOBILIZED ZINC-LEAD-SILVER VEINS. NOTE ROUNDED QTZ VEIN FRAGMENTS



PRIMARY COARSE GRAINED MASSIVE SULPHIDE



PRIMARY COARSE-GRAINED SPHALERITE

“Impregnation” sphalerite-pyrite-galena between massive sulphide veins

Sphalerite galena-rich pyrite-poor composition

Sharp, finely irregular contact

GUMSBURG: VALLBERGET-LOBERGET



DRILL RESULTS – 2017/2018

OPPORTUNITY / EXPLORATION POTENTIAL

- **High-grade precious metal** enriched base metal SEDEX and remobilized vein style mineralization intercepted during 2017 and 2018 by Norden Crown.
- Drilling intercepted several stratiform exhalative (disseminated sphalerite hosted in very fine grained sediments) and syntectonic mineralized horizons extending over 3kms.
- Zinc, lead, copper and silver massive sulphide deposits along the trend.
- Shallow historical drill testing does not exceed 100m.
- Potential for discovery of new mineralization remains at depth and along trend.
- Geophysical anomalies indicate geological continuity under cover.
- 2016 Drilling by EMX Royalty:
 - 2.8 meters of 17.9% Zn, 6.9% Pb, 0.5% Cu, and 68.9 g/t Ag (GB16-2)
 - 3.0 meters of 9.2% Zn, 3.0% Pb, and 12.8 g/t Ag (GB16-5)
- Shallow (1930's era) drilling highlights:
 - 9.8m @ 22.9% Zn; 0.7% Pb (78.70 – 88.50m)
 - 3.7m @ 17.1% Zn; 1.9% Pb (57.5 – 61.2m)

Hole	From	To	Length	Ag	Au	Zn	Pb	Cu	Ag Eq
Meters	Meters	Meters	Meters	g/t	g/t	%	%	%	g/t
BM-17-001	101.30	104.40	3.10	32.34	0.16	10.97	2.25	0.39	480.52
BM-17-002	92.30	94.20	1.90	51.75	0.34	13.55	5.23	0.27	670.33
BM-17-006	14.88	19.95	5.07	9.25	0.02	3.00	0.96	0.06	138.02
BM-17-011	53.50	56.65	3.15	11.69	0.19	3.03	0.62	0.44	152.59
BM-17-011	130.50	136.20	6.70	11.14	0.00	7.01	0.44	0.10	266.85

Silver Equivalent is calculated based on 100% recoveries and incorporates the following metal prices: USD \$1,750 Gold, USD\$ 20.00 Silver, USD 0.82 Lead, 3.05 Copper and 1.05 Zinc.



Vallberget Mine Workings

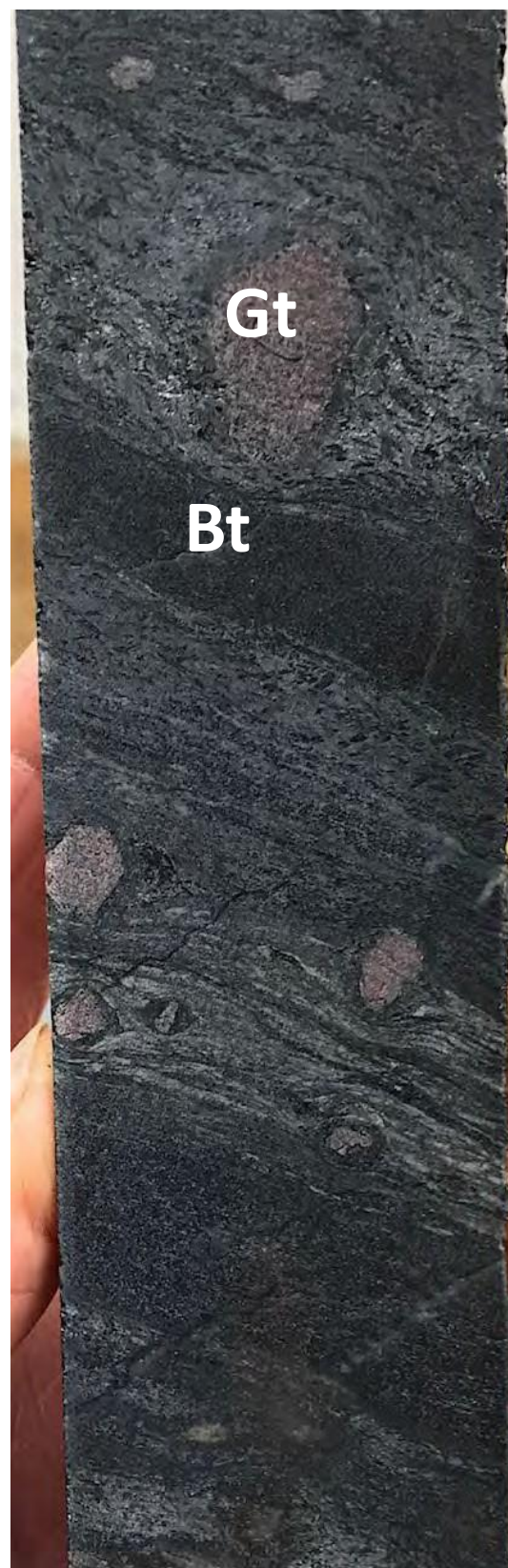


Stratiform Sphalerite at Loberget

GUMSBURG: VALLBERGET-LOBERGET MINERALIZATION AND ALTERATION



**Mellangruvan
Remobilized veins**



**Mellangruvan in situ
Bedded stratiform
exhalitive**



**Mellangruvan strong
biotite > garnet
alteration that encloses
a MS sulphide vein**



**Intense biotite –
pyrite alteration halo
on one side of a MS
vein at Tron prospect**



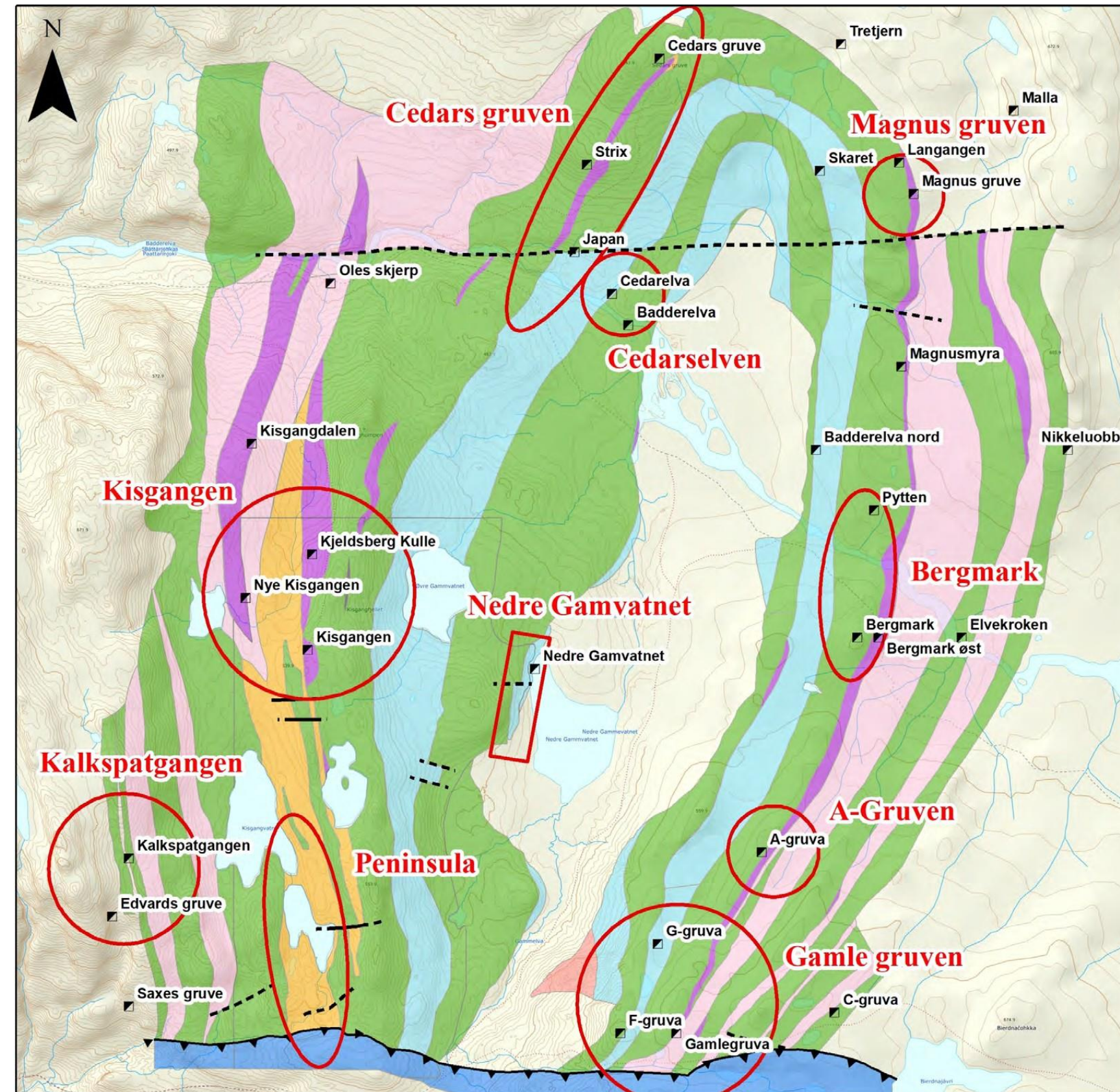
**Cpy-py-po
veinlets and
disseminated Sp
adjacent to
massive sulphide
vein**

BURFJORD JV PROJECT (BOLIDEN, NOCR OPERATES) - Copper & Gold



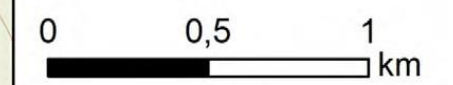
PROJECT TERMS AND SUMMARY

- Boliden may earn a 51% interest in the Project by incurring US\$6M on exploration and development of the project over four years.
- Boliden may earn an additional 29% interest in the Project by solely funding further advancement work through the delivery of a NI 43-101 and PERC compliant feasibility study.
- 10 High priority targets advanced to drill testing based on 2020/21 field Programs.



Legend

- Historic Prospects
- Target Areas
- Black Shale
- Caledonides
- Clastic Sediments
- Dolomite
- L-Unit
- Mafic Volcanics
- Redbed
- Normal Fault, Certain
- - - Normal Fault, Uncertain
- ▲ Thrust, certain



BURFJORD: EXPLORATION SUMMARY

KEY POINTS

- Six exploration licenses totaling 5,500 hectares in the Kåfjord Copper Belt near Alta, Norway.
- Historical drilling on the project intersected 7.00 meters @ 3.6% Cu¹.
- Norden Crown drilled seven holes in 2018/2019 intersecting 32.0 meters @ 0.56% Cu and 0.26 g/t Au including 3.46 meters @ 4.31% Cu and 2.22 g/t Au.
- Project is centered on a 4 by 6 km anticline with an intense iron-carbonate-albite alteration footprint and numerous copper-gold showings consistent with Iron Oxide Copper Gold deposits.
- Twelve holes drilled during winter and summer diamond drill programs completed in 2021. Intercepts include 12m @ 1.27% Cu and 30.1 meters @ 0.28% Cu.



Bergmark Prospect, Burfjord Project, Norway



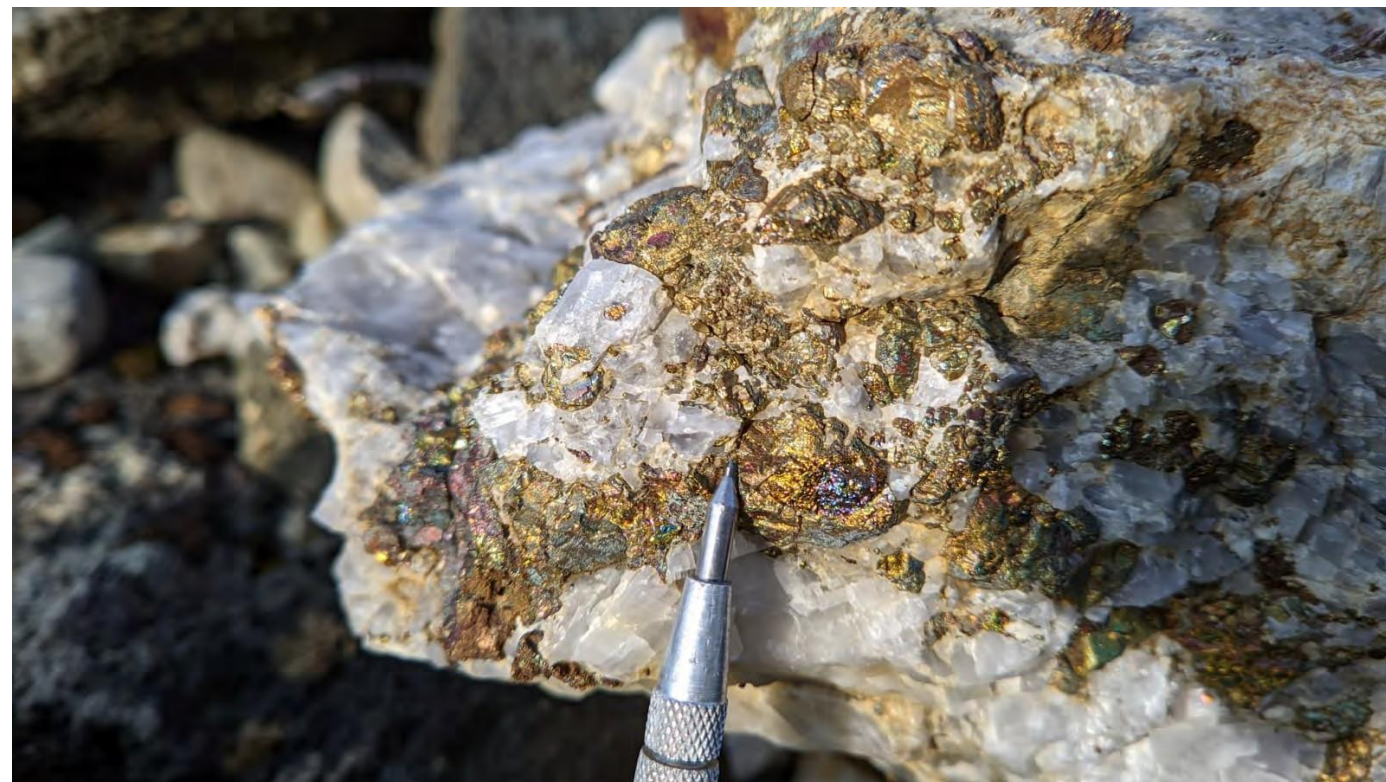
Copper mineralization (chalcopyrite-bornite)

¹ Source: NGU Deposit Factsheet, Deposit Area 1943-010, 1997. Norden Crown property reviews have confirmed the geologic setting and occurrence of mineralization on the Project and considers the historic exploration data to be relevant as reported in public disclosures and government reports.

BURFJORD: EXPLORATION SUMMARY



Malachite staining, Gamle Gruva prospect, Burfjord Project, Norway



Copper mineralization, Cedarselven prospect, Burfjord Project, Norway

2021 SELECTED DRILL RESULTS



Hole ID	From Metres	To Metres	Length Metres	Cu %	Au g/t	Co ppm
BUR-21-002	74	85.9	11.9	0.24	0.02	51
BUR-21-002	179.8	193.7	13.9	0.19	0.03	71
BUR-21-003	164.9	195	30.1	0.28	0.04	59
<i>Incl.</i>	164.9	176	11.1	0.46	0.05	39
<i>Also Incl.</i>	191.5	193.6	2.1	1.01	0.16	329
BUR-21-004	141.3	158.5	17.2	0.34	0.04	57
<i>Incl.</i>	141.3	143.4	2.1	0.94	0.09	75
<i>Also incl.</i>	155.25	158.5	3.25	0.79	0.10	39
BUR-21-004	182.3	207	24.7	0.24	0.04	160
<i>Incl.</i>	200.2	203.6	3.4	0.47	0.08	114
BUR-21-004	219	229	10	0.12	0.02	32
BUR-21-005	74.5	76.5	2	0.76	0.06	93
BUR-21-005	115.4	118.5	3.1	3.81	0.31	179
<i>Incl.</i>	117.15	118.5	1.35	8.67	0.69	332
BUR-21-006	69.35	78.15	8.8	0.51	0.17	77
BUR-21-006	131.5	136.9	5.4	0.22	0.02	74
<i>Incl.</i>	135.5	136.9	1.4	0.46	0.03	99
BUR-21-006	153.6	158.95	5.35	0.19	0.27	266
<i>Incl.</i>	154.7	155.85	1.15	0.46	1.06	41
BUR-21-009	42.8	63.9	21.1	0.17	0.01	47
<i>Incl.</i>	53	63.9	10.9	0.26	0.02	33
BUR-21-009	104	108.4	4.4	0.27	0.02	83
<i>Incl.</i>	105.2	108.4	3.2	0.34	0.03	97
BUR-21-009	152	162	10	0.39	0.03	33
<i>Incl.</i>	156	162	6	0.62	0.05	35
<i>Also incl.</i>	158	160	2	1.59	0.14	39
BUR-21-009	193.5	208.4	14.9	0.21	0.02	22
BUR-21-009	246.1	255.2	9.1	0.39	0.07	70
BUR-21-011	75	87	12	1.27	0.09	21

PLANNED EXPLORATION PROGRAMS

PLANNED EXPLORATION PROGRAMS 2022

Gumsberg Licence: Airborne EM Survey

Östra Silvberg: 2,500 metres drilling; 8 holes

Fredrikssons: Ground Magnetic Geophysical Survey(Completed)

Fredrikssons Gruvan: 5,000 metres drilling; 20 holes

Burfjord: Geological mapping, sampling and prospecting

Burfjord: Property wide magnetic and electromagnetic geophysics

Burfjord: 5,000 – 7,000 meters drilling



SUMMARY

Diversified portfolio with massive exploration potential

Scandinavia – great, low risk jurisdiction

Ongoing winter and summer exploration programs

Surrounded by active and historical mines with potential for rapid resource development

Experienced and accomplished management team

Strategic partners – Boliden Minerals AB



TSX-V: NOCR
OTCQB: NOCRF

FOR MORE INFORMATION, PLEASE CONTACT:

Patricio Varas
+1.604.831.9306
info@nordencm.com

Owen King
+1.604.618.1835
owen.king@nordencm.com

TSX-V: NOCR | OTCQB: NOCRF | FRA: 03EA.F